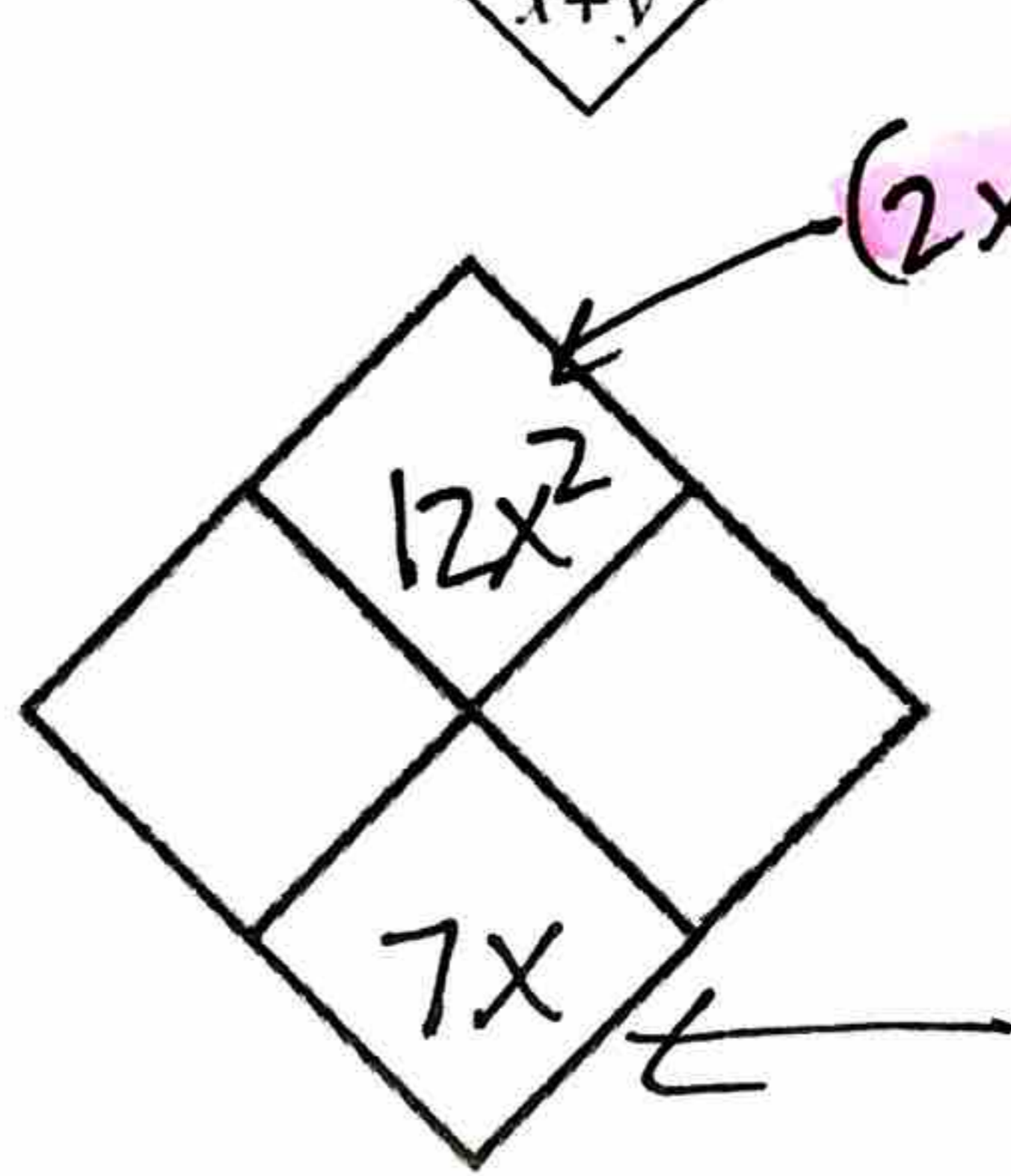
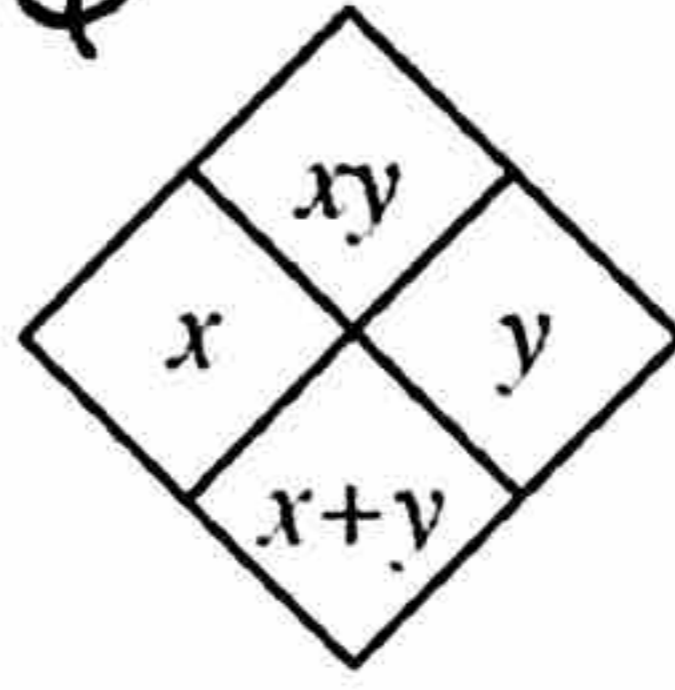
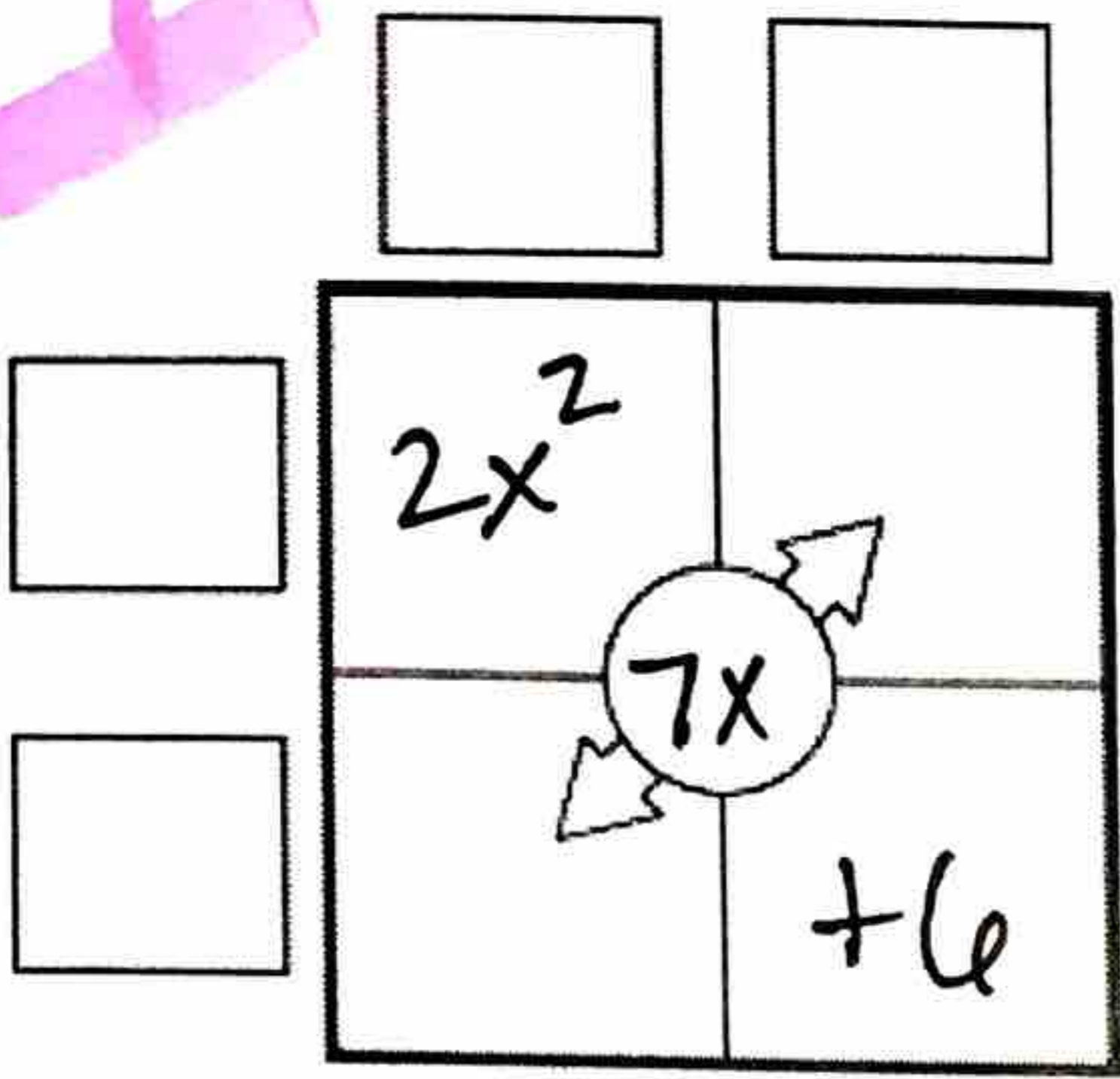


Factor $2x^2 + 7x + 6$

How to factor with area model

Step 1

Fill in area model & diamond problem

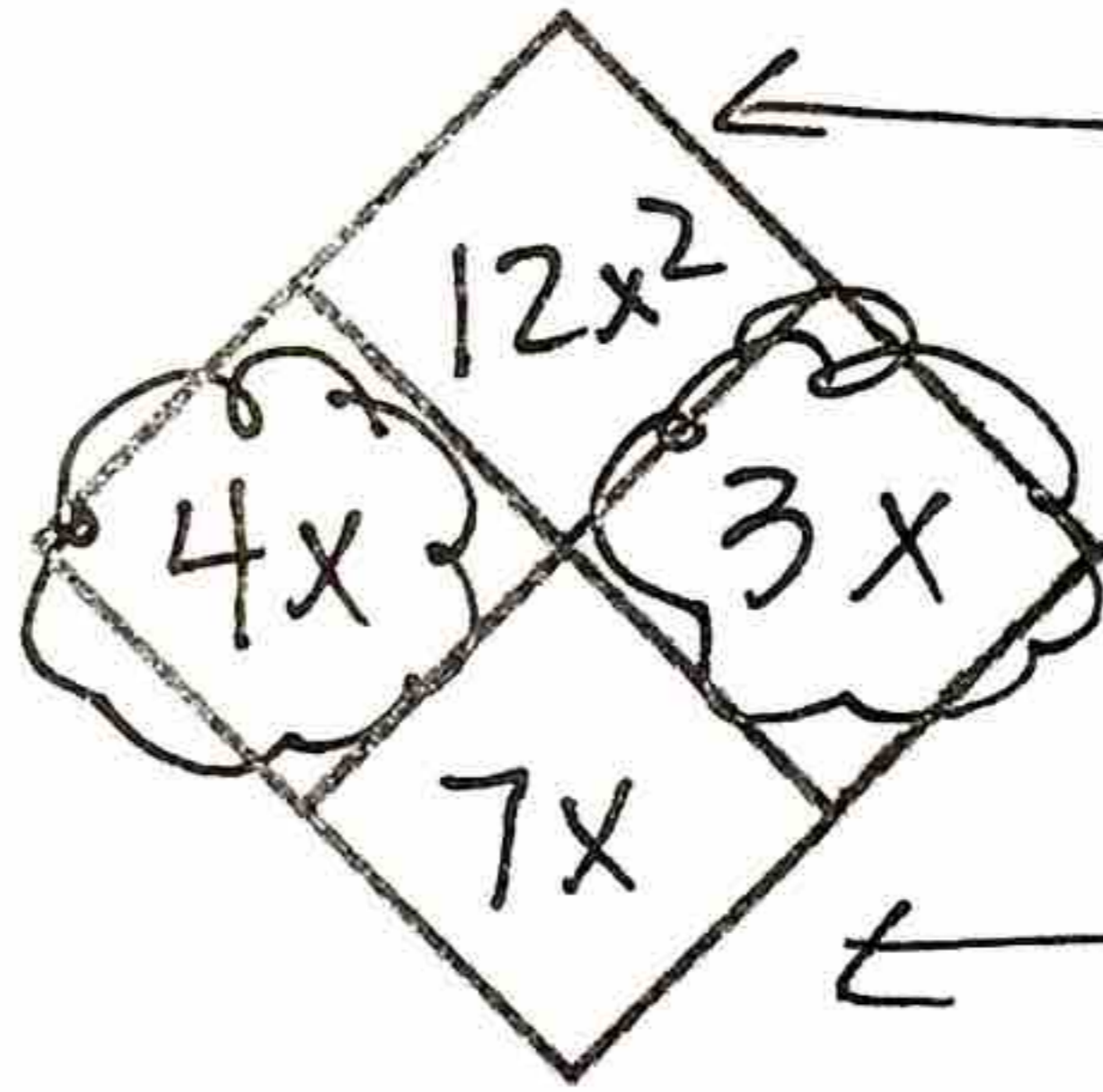
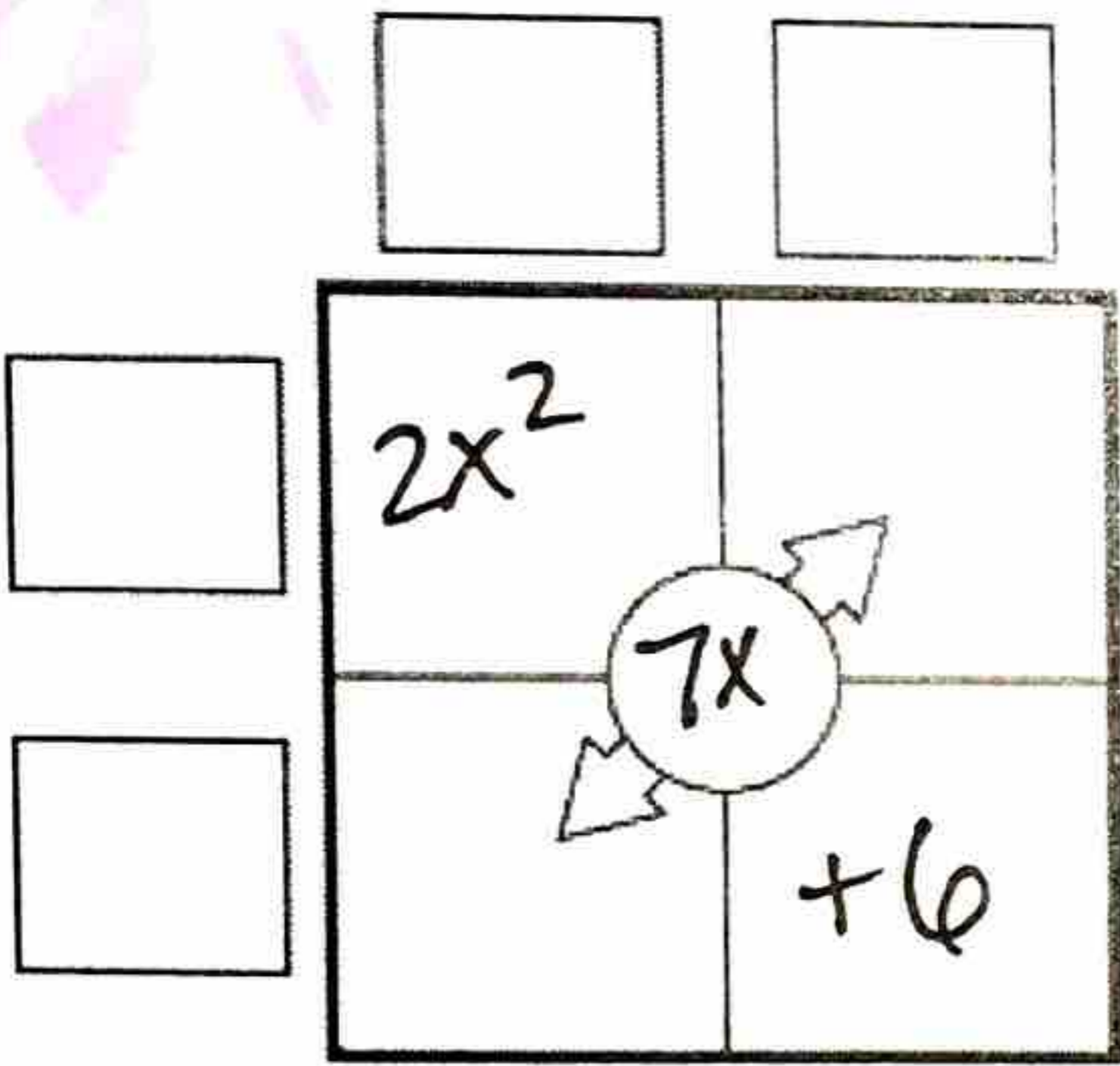


$(2x^2)(6)$

Casey's method from 4.1.1.

Step 2

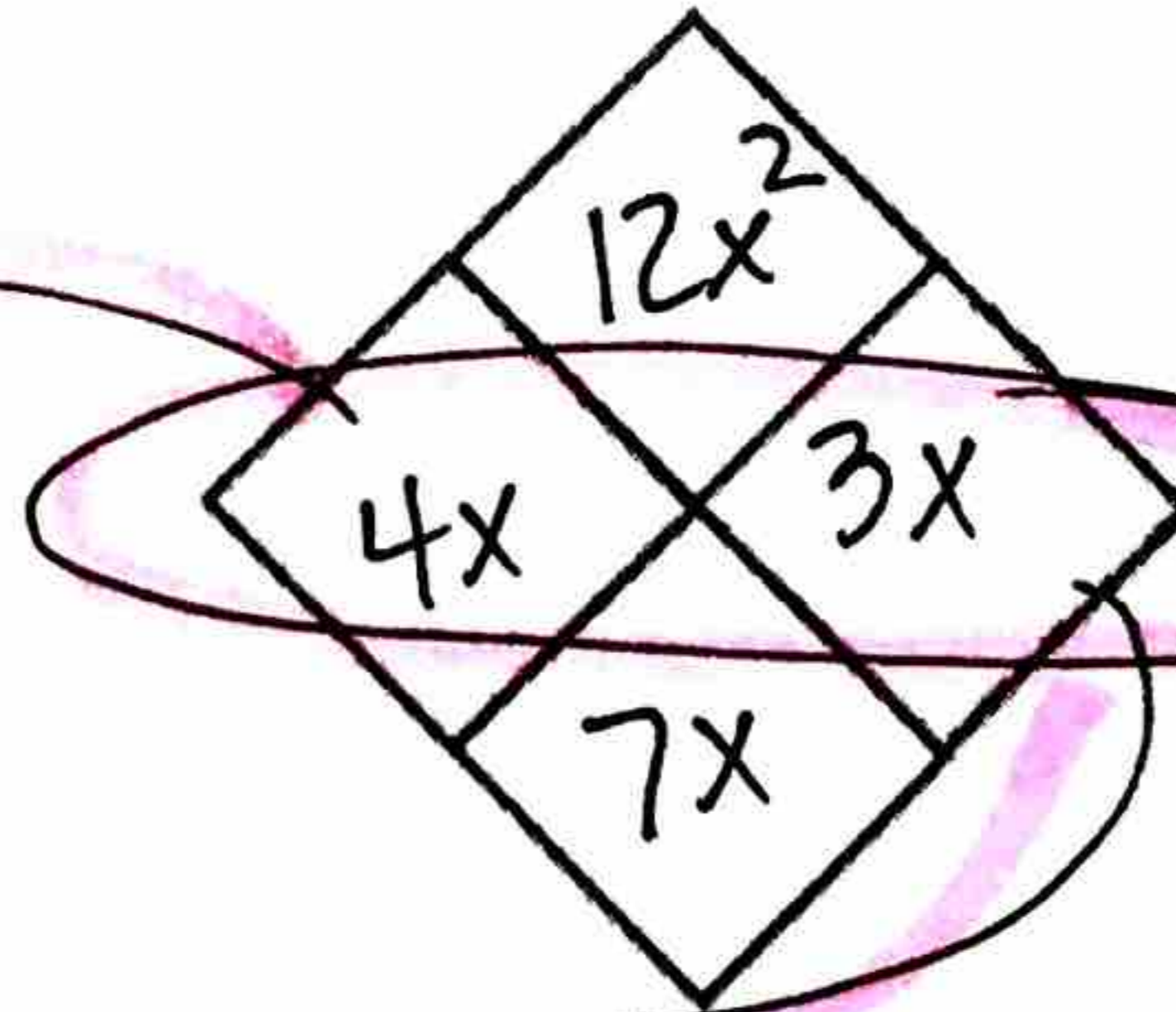
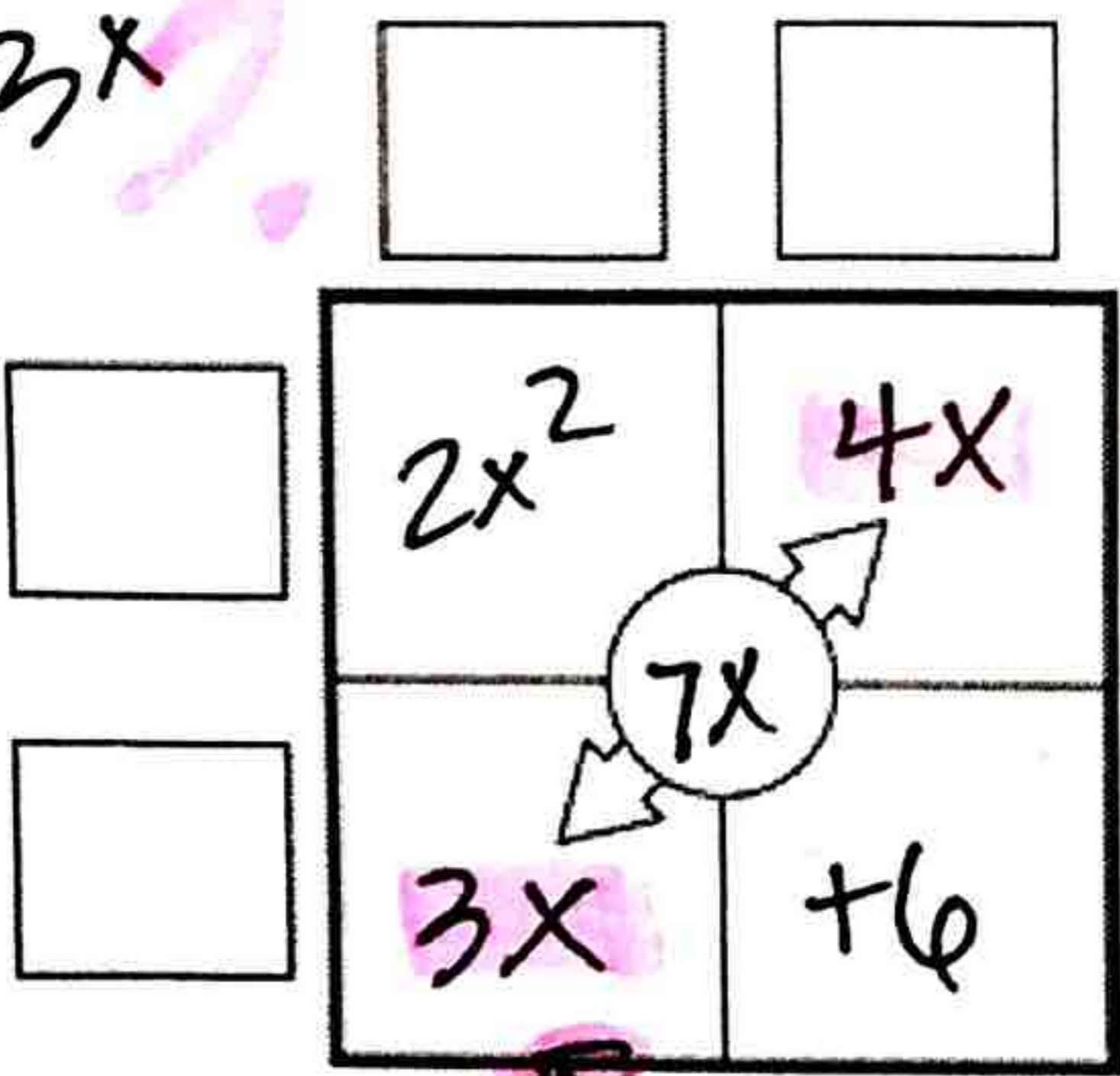
Finish the diamond



What adds up to $7x$ that multiplies to get $12x^2$?
 $4x, 3x$

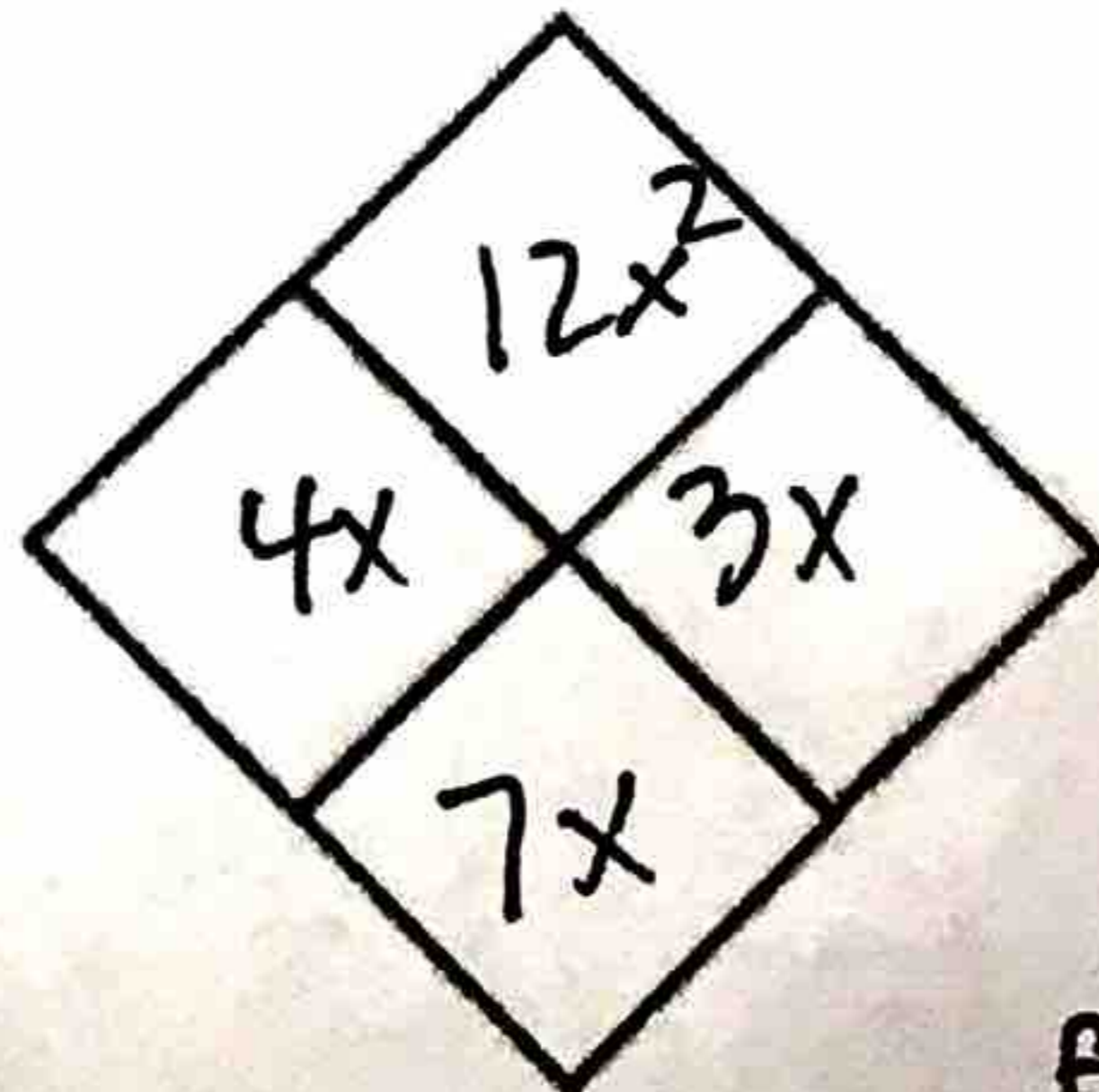
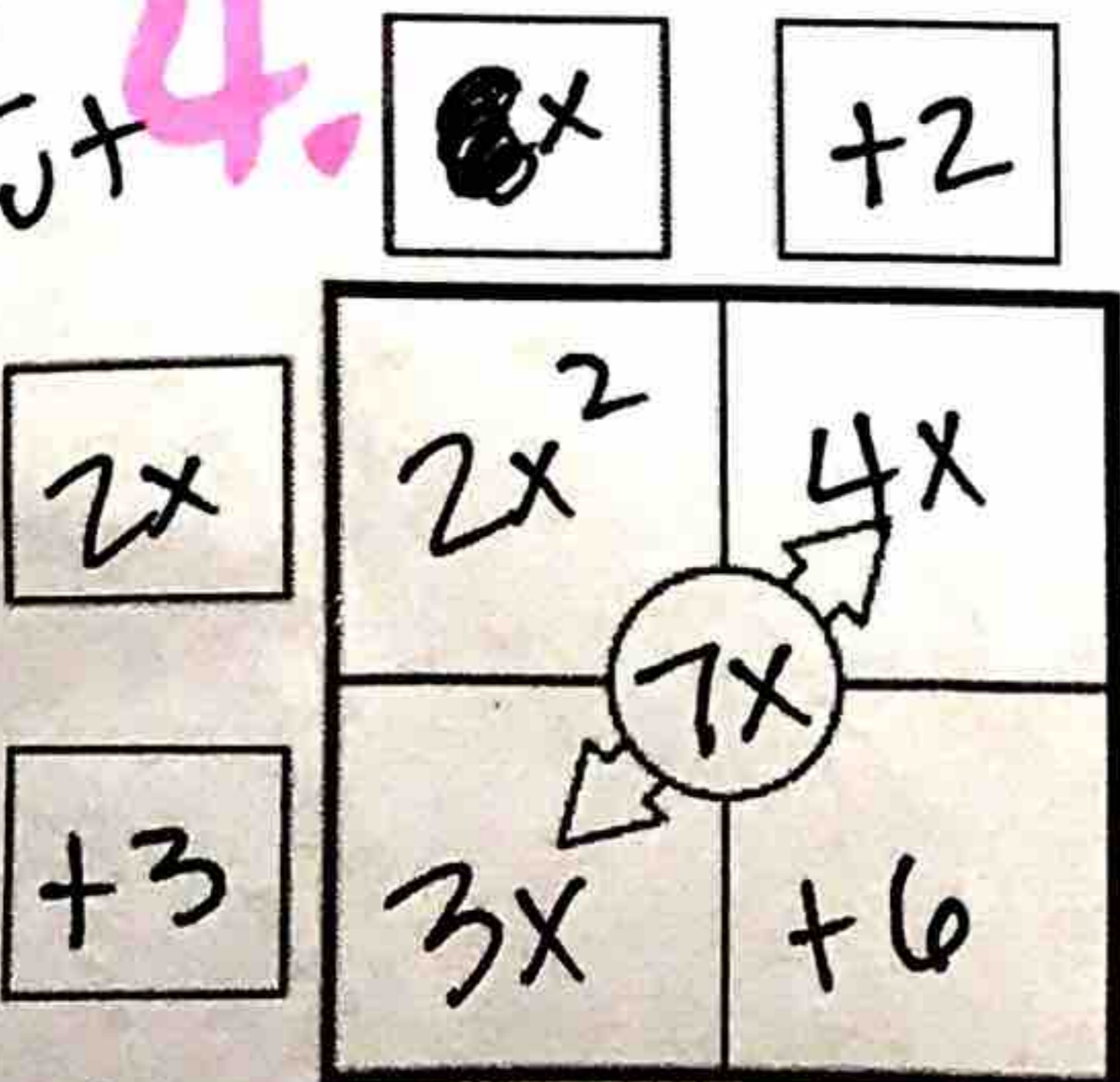
Step 3

The $4x$ & $3x$ fill in the area model.



Step 4

Figure out the binomial factors. check! write answer!



Factored form

check 4 squares $2x^2 + 7x + 6 = (2x + 3)(x + 2)$