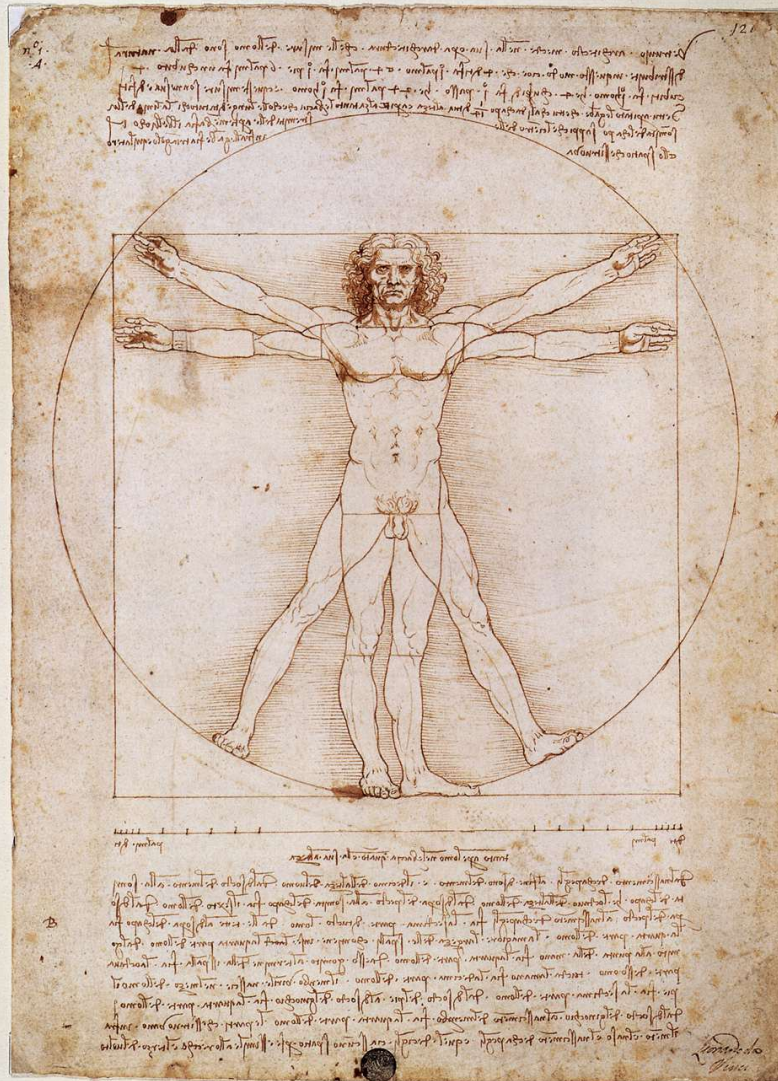


# Chapter 1



## Introduction to Anatomy & Physiology

Mrs. Black

# Ch 1.2 Anatomy and Physiology

---

- **ANATOMY:** structure (morphology), form and how the parts are organized
- **PHYSIOLOGY:** function, what the parts do and how they work
- Structure and function are closely associated and hard to separate in the human body. How a part is put together (Anatomy) effects how that part will work (Physiology).

Crash Course  
Anatomy

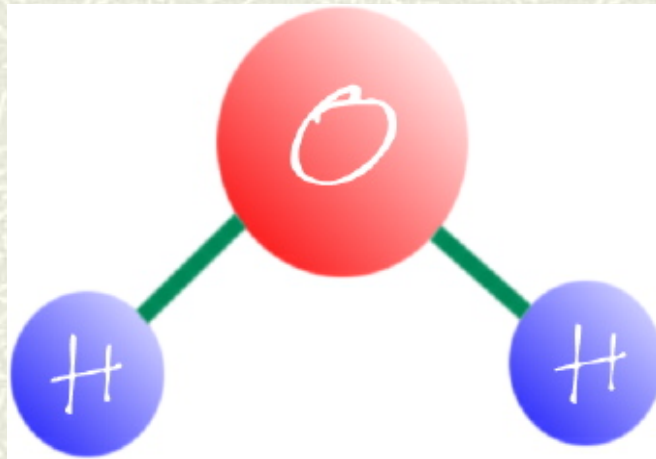
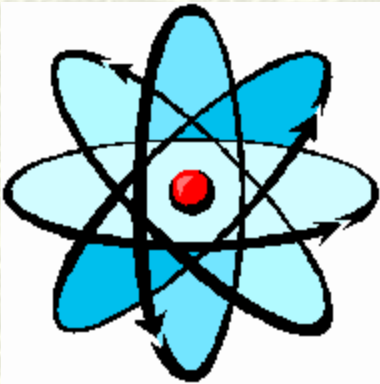
Top 10 Facts  
of the Body

15 Useless  
Body Parts

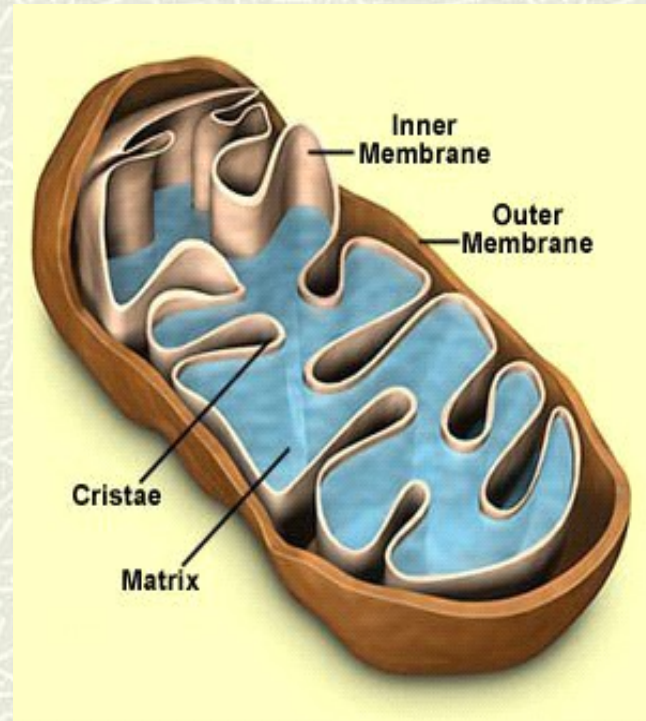
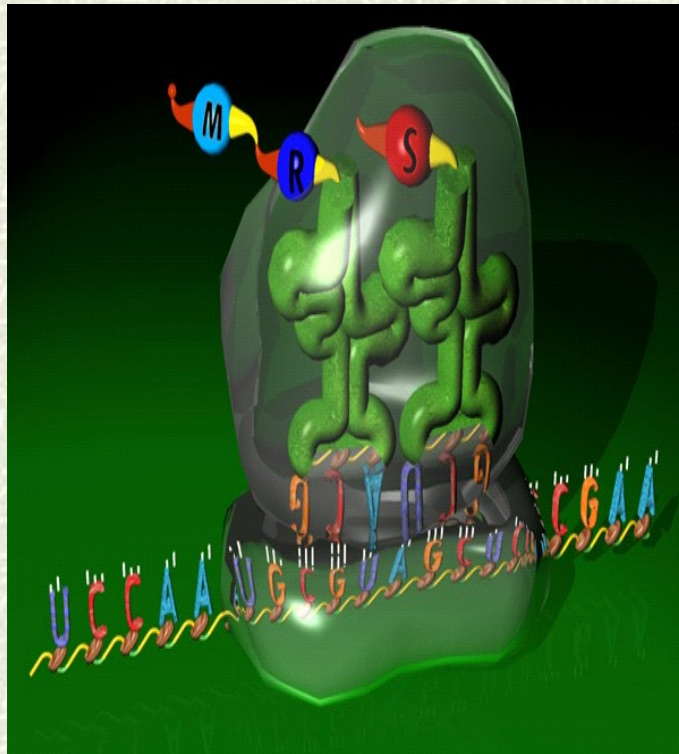
# Ch 1.3 Levels of organization: Larger body parts are made of smaller parts.

## 1. Chemicals:

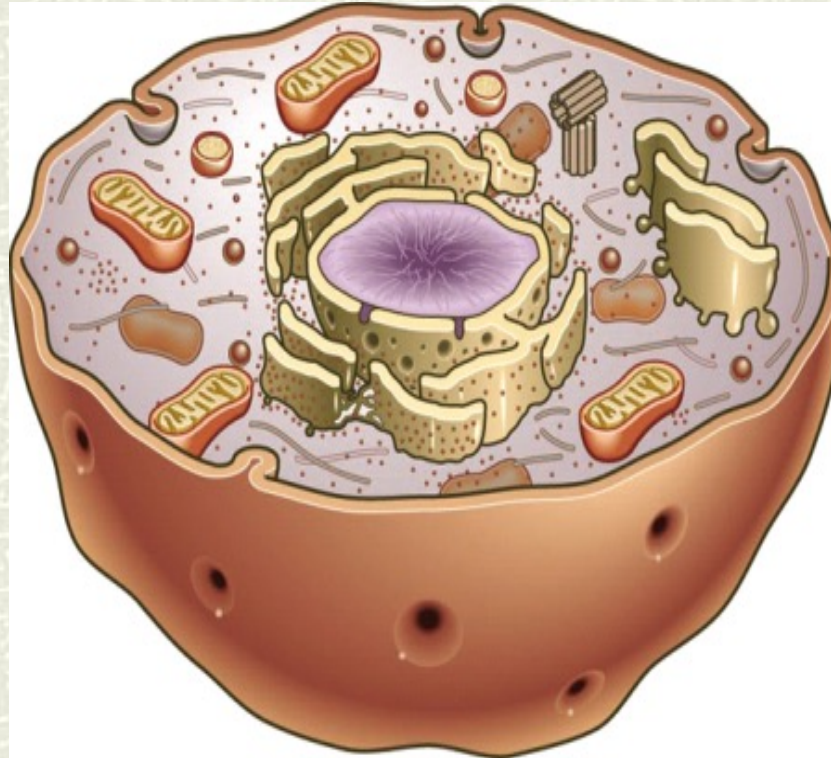
Atoms-Molecules-Macromolecules



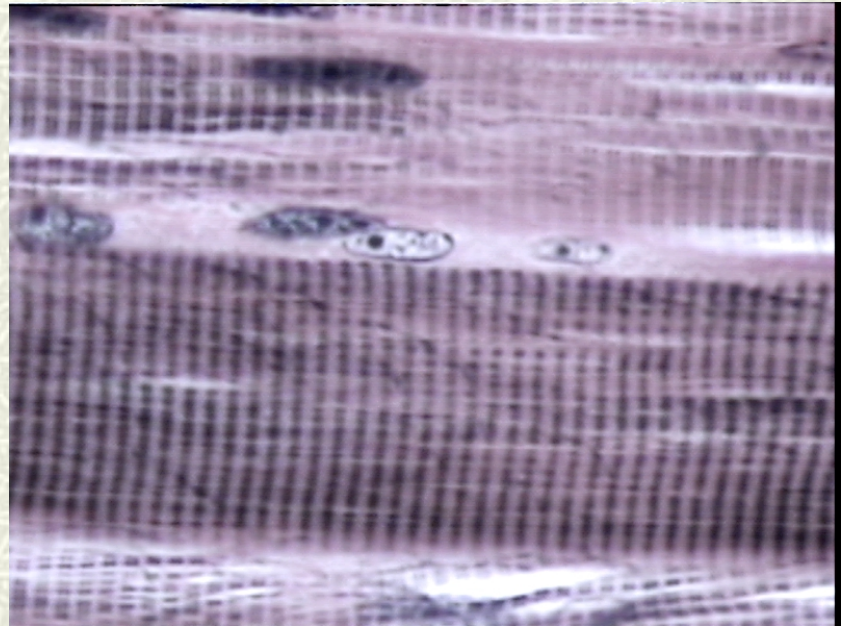
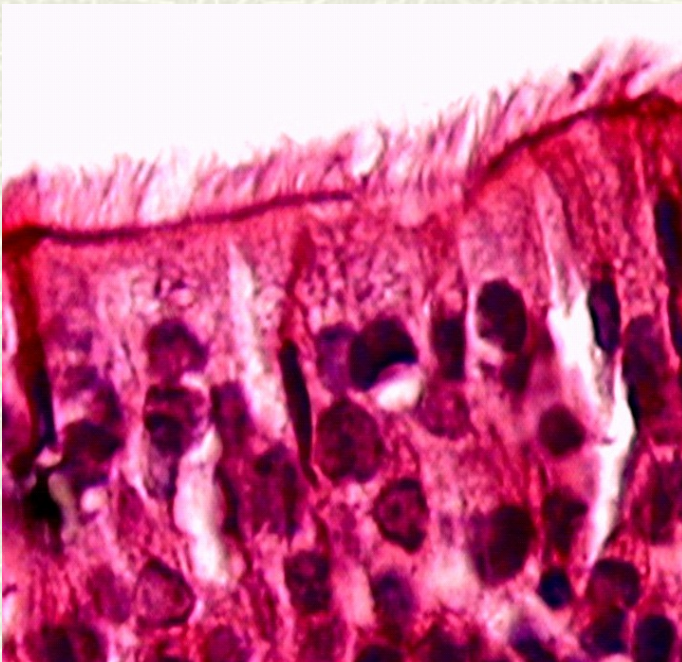
## 2. Organelles: parts within the cell (examples: ribosomes & mitochondria)



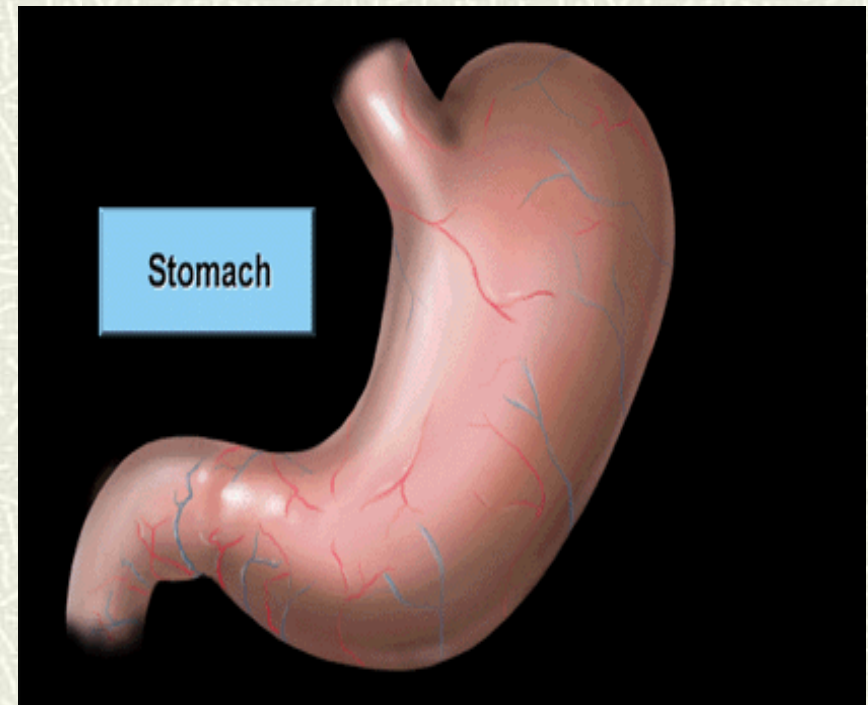
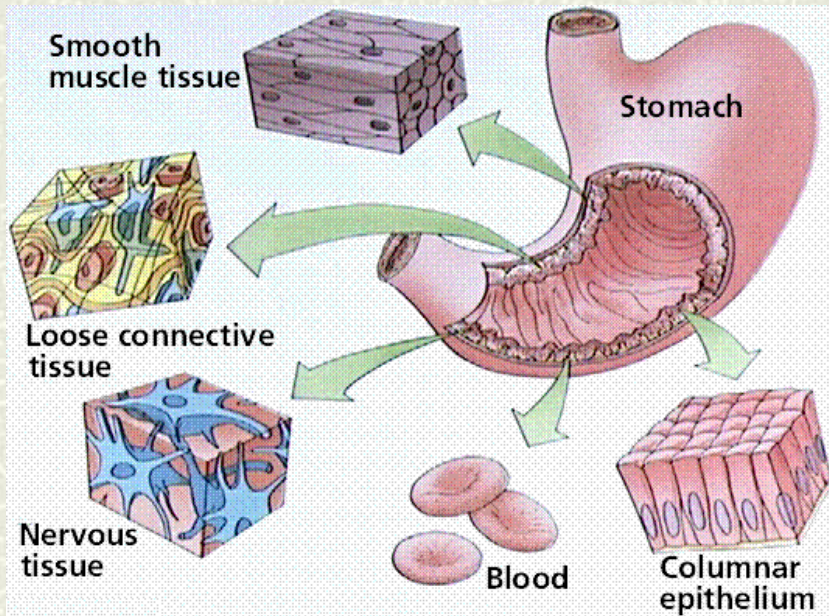
### 3. Cells: basic unit of life



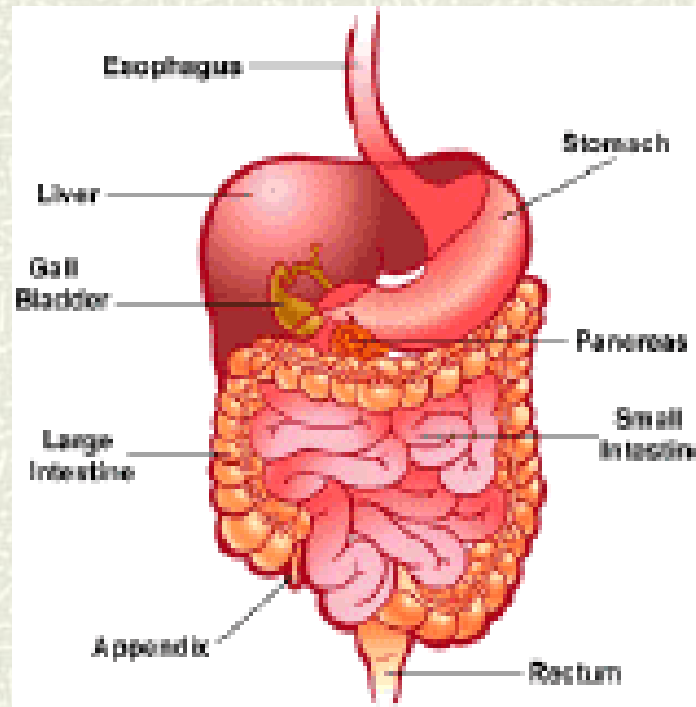
## 4. Tissues: layers of cells with common function



## 5.Organs: different groups of tissues. With specialized function.



## 6. Organ systems: groups of organs that work together





7. Organism: organ systems put together



# Increasing levels of complexity

Copyright © The McGraw-Hill Companies, Inc. Permission required for reproduction or display.

